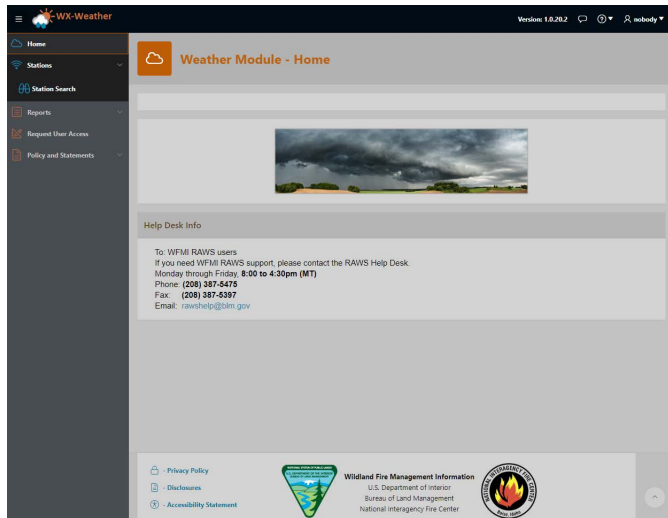


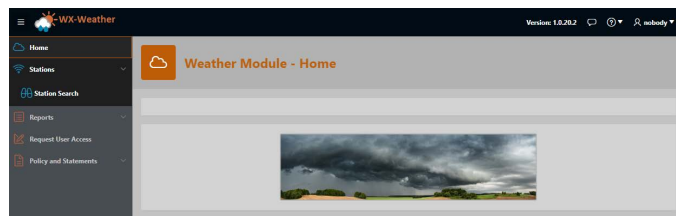
# WX Weather Site Navigation Instructions



After logging into WX Weather locate the main navigation menu on the left side of the screen. Here you will see menu items depending on your user role. Users with higher levels of access will have additional navigation menu items. These instructions will cover options that most users will encounter.

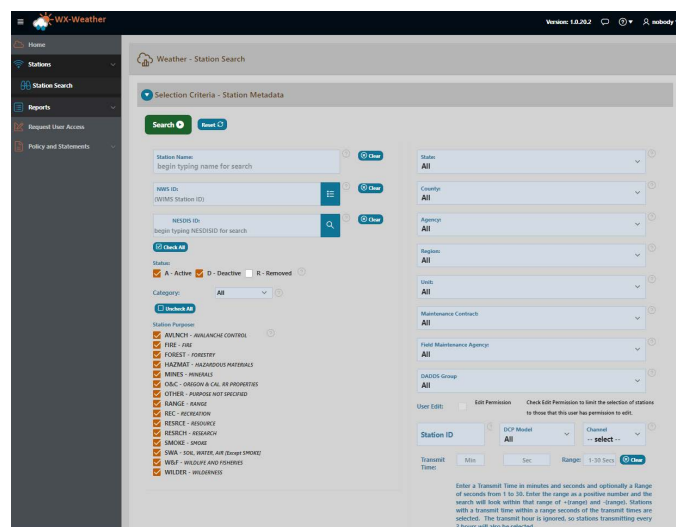
- Home
- Stations / Station Search
- Reports
- Request User Access
- Policies and Statements

## Home

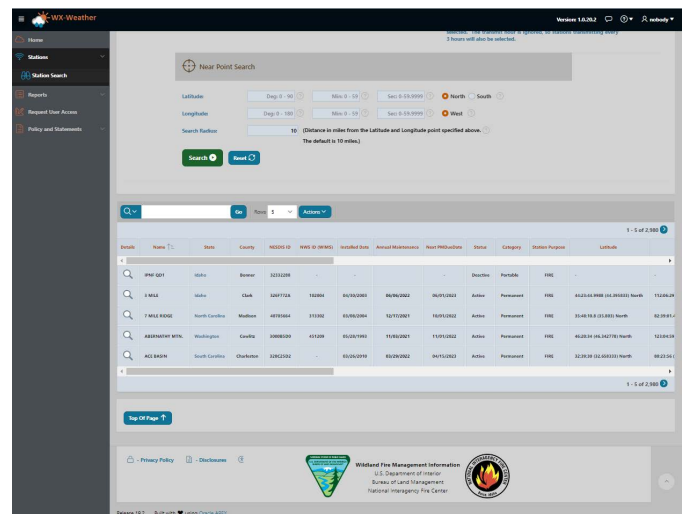


The HOME menu bar item will bring users back to the home screen, which contains contact information and other additional information.

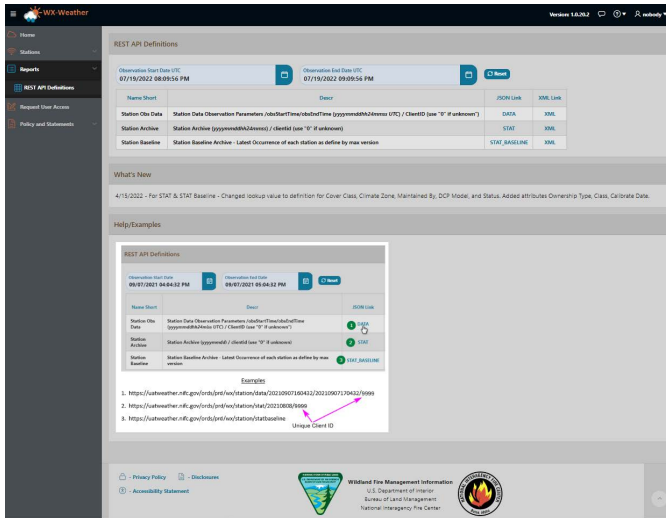
## Search / Station Search



The Search / Station Search navigation menu item will allow users to search for stations using different parameters. Additional instructions on Search functions can be found on <https://raws.nifc.gov/wildland-fire-management-information-wfmi> under the section titled "Lesson 4 Search Functions".



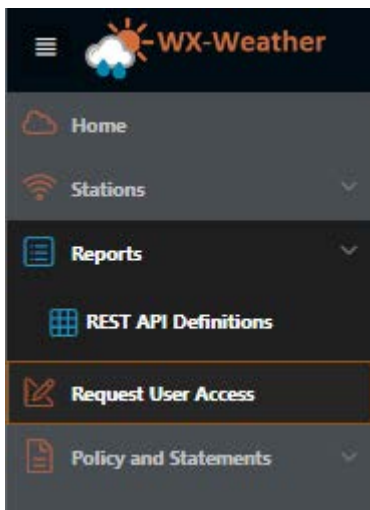
# Reports / REST API



The Reports / REST API allows users to access API call functions to make direct calls for weather observation data based upon date search parameters.

Users can enter the start and stop dates in the search box and click on the JSON or XML links to retrieve historical data.

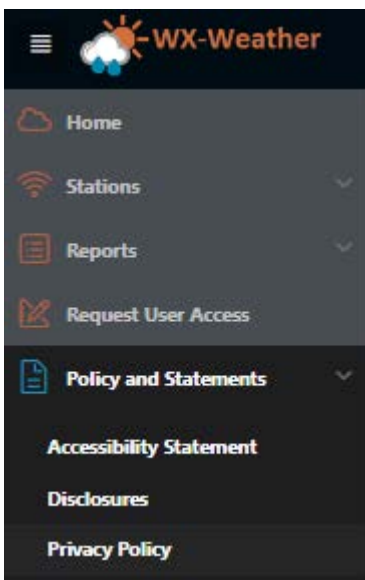
# Request User Access



The Request User Access navigation link provides a user access request form for users who require elevated access to RAWS weather station(s) within the WX Weather system. Elevated access to RAWS weather stations allows users to maintain station items such as ordering parts, updating station post trip updates and updating Last PM Completed dates.

Users should fill in this form, route the form through their appropriate regional manager and send the form to the RAWS Helpdesk for approval and account creation.

# Request User Access



The Policy and Statements navigation link will take users to the WX Weather system Accessibility Statement, Disclosures, and Privacy Policy.