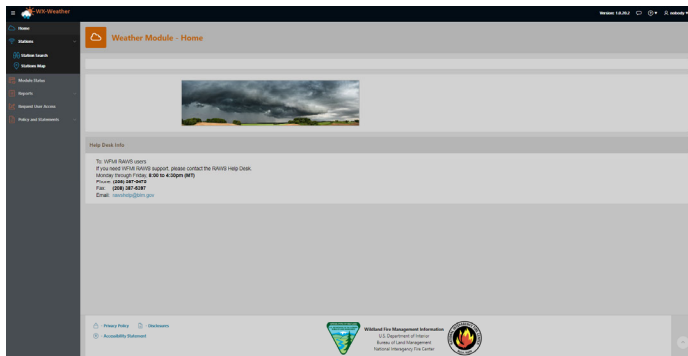


Lesson 4: WXx Weather - Station Selection

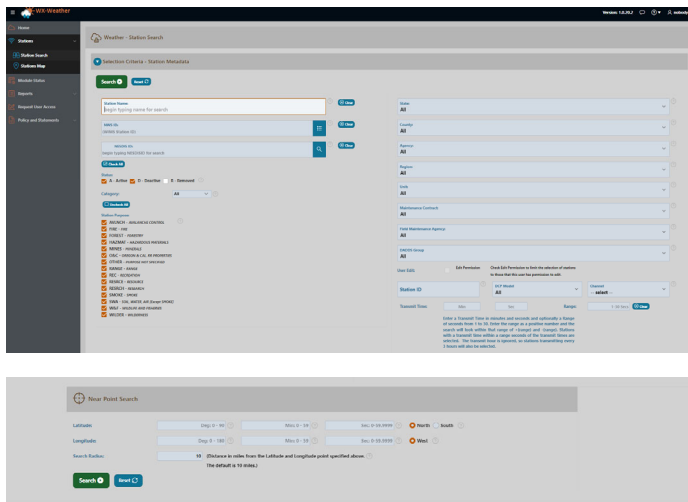
This document will cover how to search for stations in WXx Weather. Stations can either be searched for by parameters, or by map. The first half of this document will cover searching for stations by parameters. The second half of this document will cover how to search for stations using the Station Map feature.

How To Search For Station(s) with search parameters



Log into WXx Weather as a Guest or with User Authentication.

Using the left menu, click on “Stations” and then in the drop down menu click on “Station Search”.



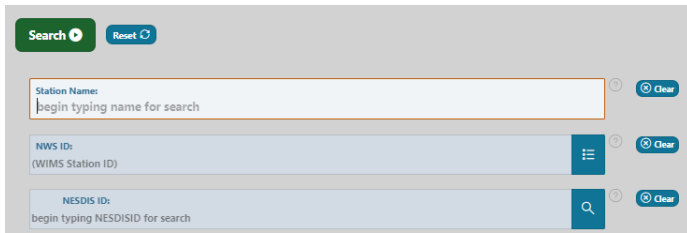
The WXx Weather Station Search window allows users to search for stations using multiple variables. Typically users will search for stations using the station name or NESDIS ID.

The left side of the screen allows searches based on station name, or WIMS ID, or NESDIS ID.

The right side of the screen allows searches based on other parameters such as State, County, Agency, Region, Unit, Maintenance Contract, Field Maintenance Agency, DADDS Group.

Users can also search based on other parameters such as Station ID, DCP Model, Channel, Transmit Time, or based on GPS location.

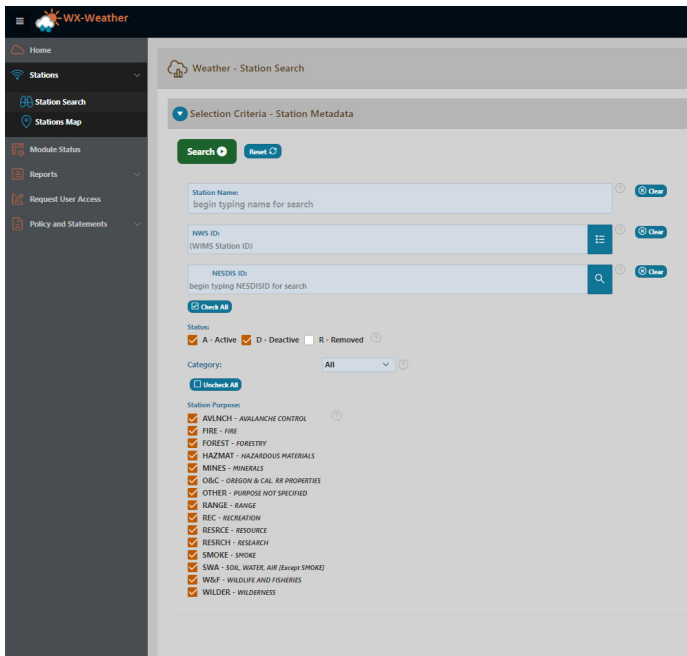
Searches can be performed on little information or can be filtered by entering more information in multiple search parameter boxes.



An important feature for users is the ability to reset the search function or clear entries if mistakes are made when entering information.

Simply click on the blue Reset button to clear all information on the entire page.

Click on the blue Clear button to clear only the text box of interest.

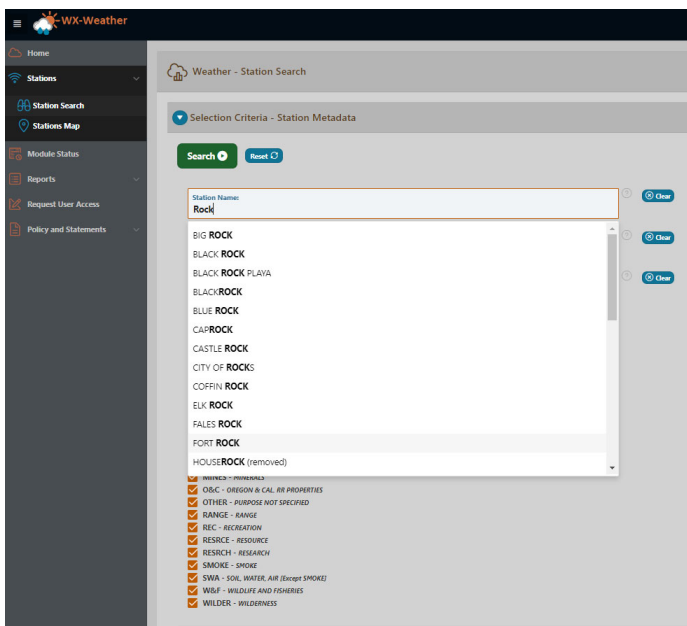


To perform a search based on Station Name, click on the Station Name box and type in the Station Name. WXx Weather will begin a search based upon the first few characters entered and generate a list of station names with those characters. You may either type out the full station name or select the station from the list WXx Weather provides.

Additionally you may search by WIMS ID or NESDIS ID in their respective text boxes.

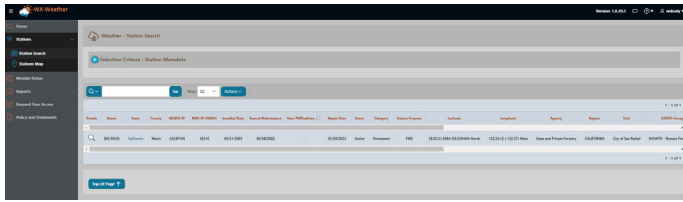
Make sure the Status “A-Active” and “D-Deactive” boxes are checked to include stations which are either activated or deactivated.

“Station Purpose” should have all options checked to widen the search window.

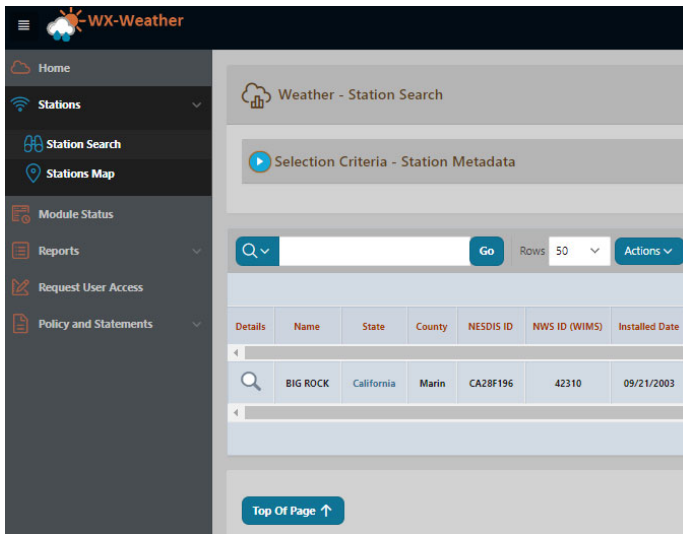


In this example the search term “ROCK” is used. WXx Weather produces a list of stations with the word “ROCK” in the name.

Click on a station name, and then click on the green SEARCH button



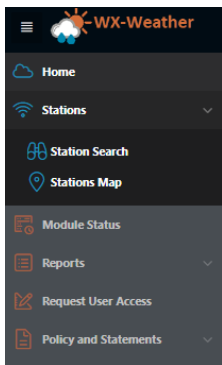
WXx Weather will then list the station of interest. To access the station page, click on the Magnifying glass icon under the “Detail” column (just to the left of the station name).



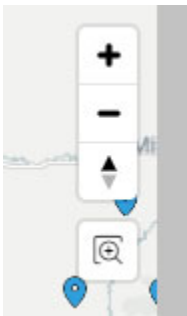
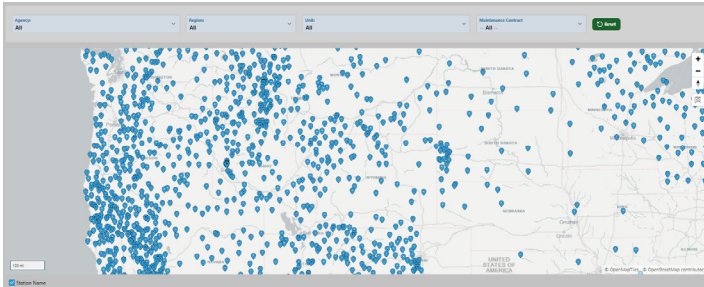
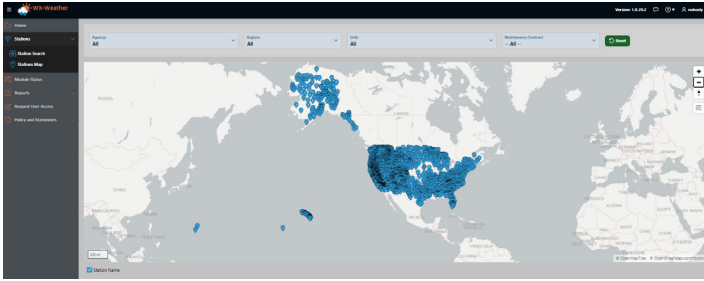
To return to the SEARCH page you can either click on “Station Search” in the menu on the left side of the screen, or click on the blue drop down arrow where it reads “Selection Criteria – Station Metadata.”

Both methods will return you to the Station Search page.

How to search for stations using the Stations Map search feature



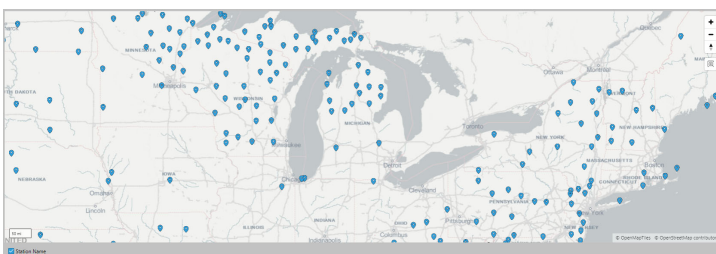
In WXx Weather on the left side of the screen click on “Stations” and then click on “Stations Map”.



+/- Expansion



Magnifier



WXx Weather will produce a map of all RAWs weather stations. You can click and drag anywhere on the map to reposition the map.

There are several ways to search for your station.

- You may narrow your search with the search parameter boxes at the top of the screen. Click on each box to produce a drop down of options and select from the options. You may use one or all of these search parameters.
- You may also simply drill down to the station of interest by either double clicking in the vicinity of the station you're searching for, or using the plus/minus expansion tool in the upper right corner of the map.
- The magnifying tool below the plus/minus zoom option allows you to click and drag a box to zoom into an area of interest. Click on the magnifying tool, and then click and drag your mouse over the map to zoom into an area of interest.

Hovering your mouse over stations will produce a pop up of the station name. (Station Name box located at the bottom left corner of the map should be checked)

Clicking on any station listed on the map will produce that station information page.

If you mistakenly click on a station that you did not mean to select, simply click the back button to go back to the map and start over.