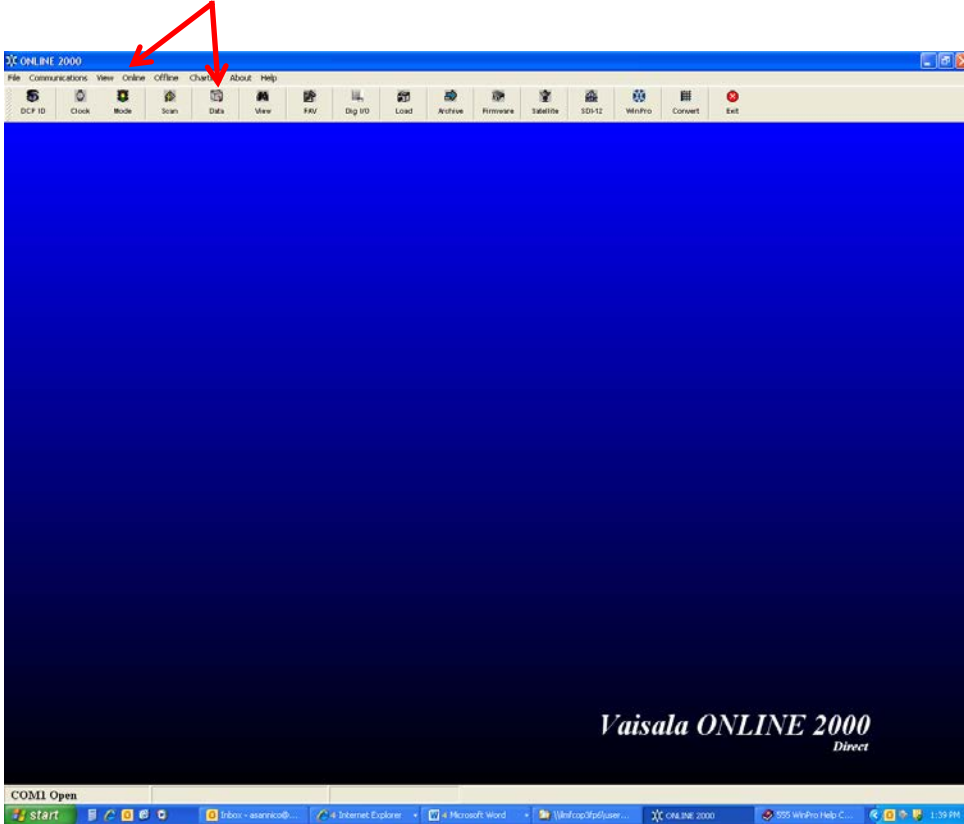


INSTRUCTIONS FOR RETRIEVING ARCHIVED DATA

EQUIPMENT COVERED: VAISALA 555/FTS F6/ FTS FWS-12S

Vaisala 555 DCP

The [Data] button and the *Retrieve Archived Data* command in the Online menu allow you to retrieve data currently stored in the DCP.

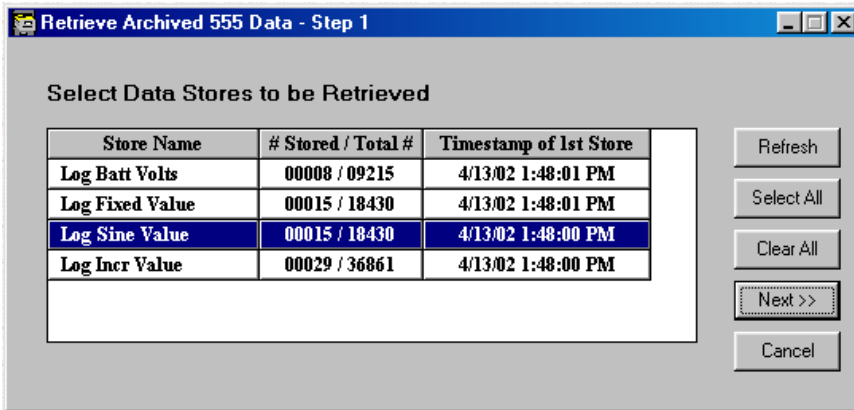


The computer must be connected to the DCP, and the DCP power must be on to use this command. You may use this command in either STOP or RUN modes (see the Mode command for information).

Note, however, that there may be no data in the DCP storage if the DCP power has just been turned on, or the DCP has just been placed in RUN mode. Other actions in STOP mode, such as loading a program, changing telemetry parameters, or updating the firmware will also erase the stored data.

If the DCP is placed in STOP mode after taking data, the collected data will be preserved until RUN mode is resumed. If you wish to save the data, do so with this command before returning to RUN mode.

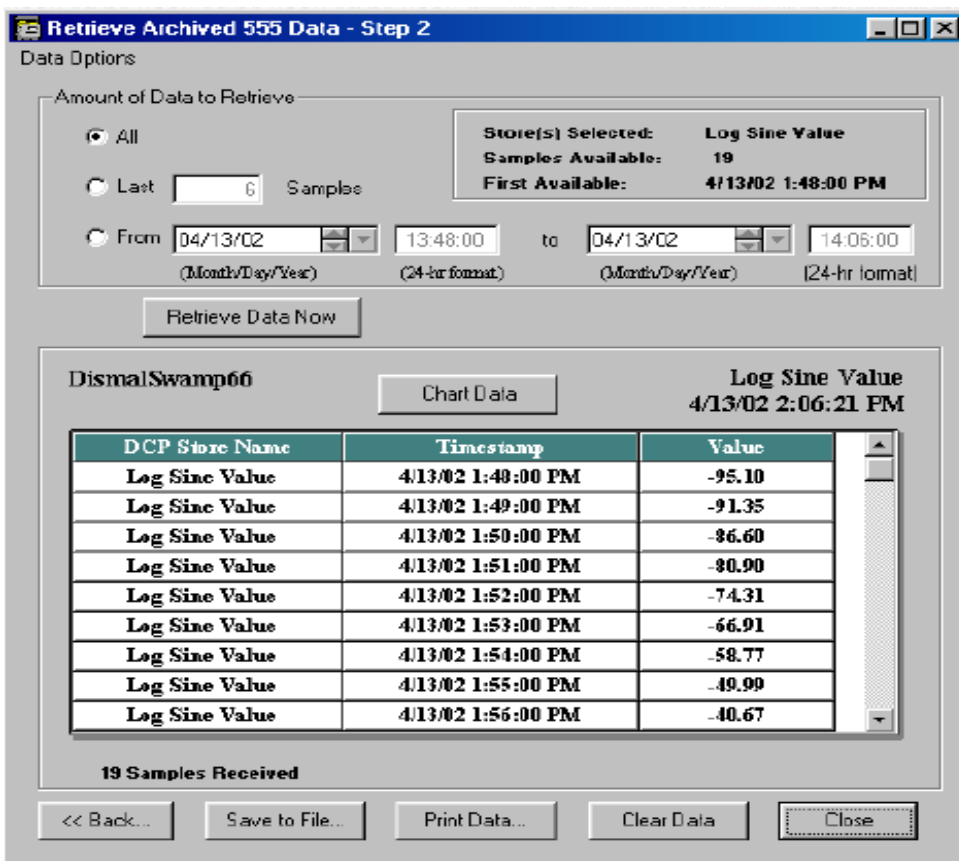
When you click the [Data] button or the *Retrieve Archived Data* command, you will see a window like that illustrated below.



The window displays a list of all of the available data store names. These names are generally the IDs of the process that stored the data. Some processes allow you to name the data stores. Select the data you wish to retrieve by clicking on its store name. The buttons at the right provide options as follows:

- [Refresh] retrieves a new list of stores from the DCP.
- [Select All] selects all of the stores for retrieval.
- [Clear All] clears the current selection of stores to retrieve.
- [Next>] proceeds to the next step of the data retrieval process.
- [Cancel] ends the data retrieval command.

Pressing [Next>] in the example window shown above produces the Step 2 window illustrated here, except that the data display area is empty.



At the top right is the name of the store, the number of samples available, and the data and time of the first one. You may click one of the buttons at the left to specify which data from the available set you wish to select.

- *All* retrieves all of the data in the store.
- *Last [____] Samples* allows you to specify a number of the most recent data values.
- *From ... to ...* allows to enter dates and times for the beginning and end of the data to be retrieved.

Once you have specified which data you wish to retrieve, click [Retrieve Data Now], and the requested data will be displayed. You have several options for viewing and storing the data.

- Click [Chart Data] at the top of the data display to see a graph of your data values against time. Click on the green text or the button in the illustration to see a sample graph. If you have more than one data store selected, there will be a different colored line on the chart for each store. Buttons at the bottom of the graph give you further options.

[Print] allows you to send the chart to a printer attached to your computer.

[Export] allows you to save the chart as a graphic in one of several formats.

[Chart Editor] allows you change the appearance of the chart to suit your requirements.

[Cancel] closes the chart and returns to the data display.

- Click the [Save to File] button at the bottom of the data display to store the data in the computer file. Click the green text or the button on the illustration above to see an example of the window that appears.

At the top of the window you may select the folder in which to store the data. The software creates a folder called "Data" within the folder "555" that contains the software. You may select another folder if you wish.

At the bottom of the window, enter the name of the file in which to store the data. Use the lower small window to select storage as text or in Handar Binary Format.

Click [Save] when you are ready to save the data, or [Cancel] to abort. In either case, you will return to the data display.

- Click [Print Data] to send the data as text to a printer. You will see the standard print dialog window for your printer. The printed format will be similar to that seen in the display.

Three other buttons are available at the bottom of the data window.

- [<<Back] returns you to the Step 1 screen, so that you can select a different data store to display.
- [Clear Data] clears the screen so that you can display a new set of data by itself.
- [Close] exits the data retrieval process and returns to the main screen. –

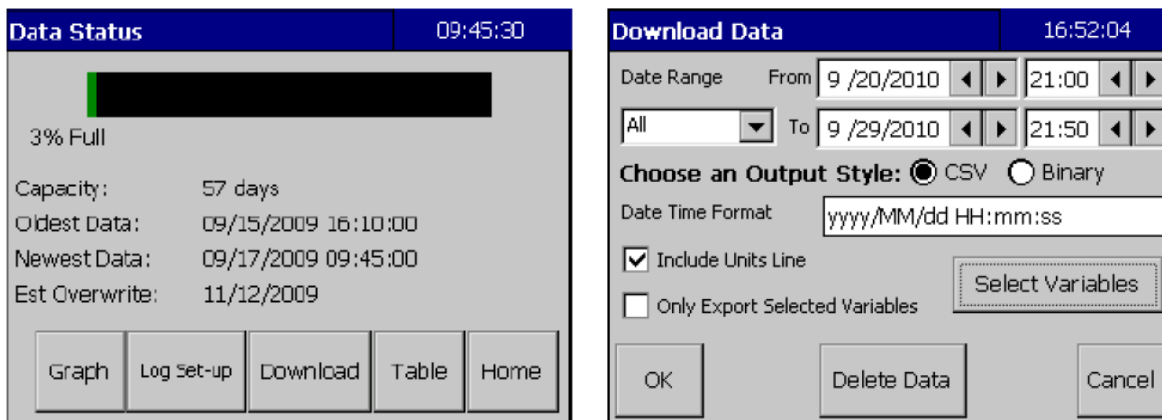
FTS F6 Datalogger

Summary of Steps

- Insert flash drive into F6 USB port.
- Select "Data" icon from homepage screen.
- Select "Download Data" icon.
- Input date range from 3/21/12 at 20:00:00 GMT up to the point that your station began transmitting through GOES again.
- Select "Download" icon.
- Select "OK" when the data directory window appears.

Download

The Download button on the **Data Status** screen allows the user to export data to a USB memory stick or erase the data stored in the datalogger.



Exporting Stored Data

The **Download Data** screen allows the user to export a copy of the logged data to a USB memory stick. The user can select the date and time range of the data to be exported as well as the data format (either CSV or binary) of the export. The downloaded data file will be time-stamped and will have the following naming format: station name-yyyy-mm-dd-hh with either a .csv or .bin extension.

CSV Format

If CSV (comma separated variable) format is selected, the user can specify the Date and Time format used in the CSV file and also specify whether to include the variables' units under the variable names in the CSV file.

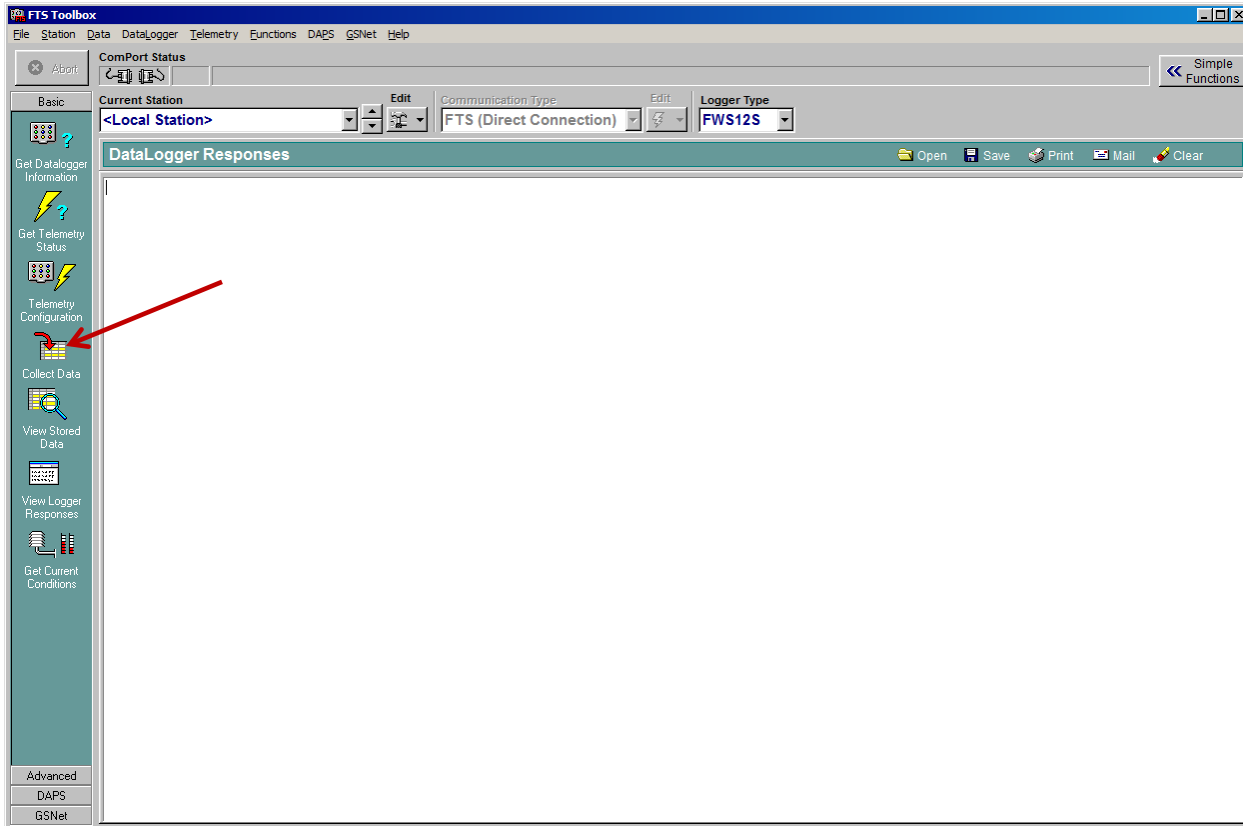
Valid Date / Time format codes are:

yyyy	year
MM	Month in numerical format (i.e. 01 for January)
MMM	Month in text format (i.e. JAN for January)
dd	day
HH	hour in 24 hour format
hh	hour in 12 hour format
mm	minute
ss	second
tt	am / pm
,	commas inserted in the Date Time Format will result in commas inserted in the output data file

FTS FWS-12S

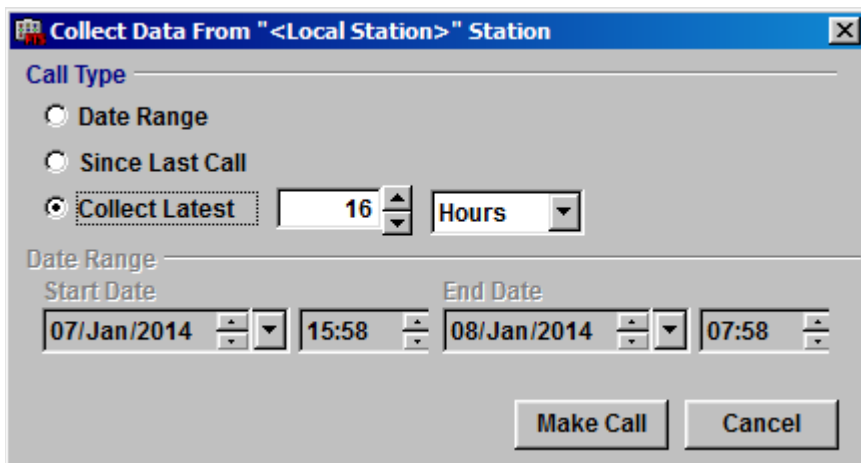
OPEN TOOLBOX

1) SELECT---**COLLECT DATA** on the left hand column (See Figure Below)



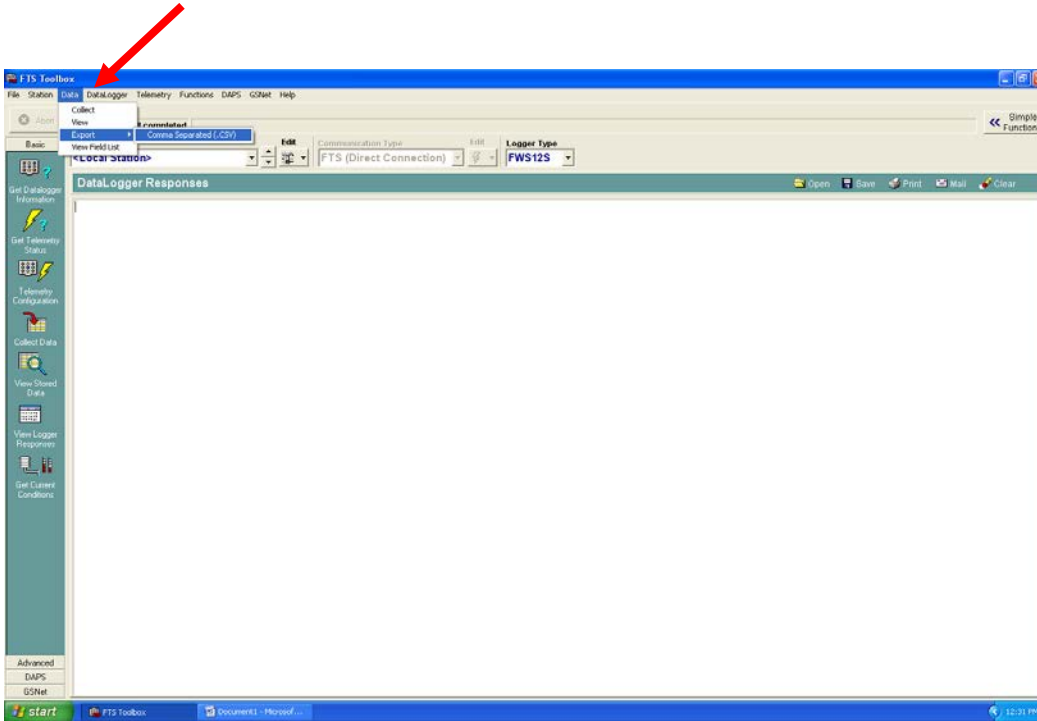
2) Under “**Call Type**” Choose one of the date range options.

Note: The larger the range the longer the datalogger will take to collect.



3) Select **MAKE CALL**

4) In the command line select “Data”, “Export”, and then “Comma Separated (.CSV)”



5) In the “Export to CSV” window:

- **Available Stations:** typically “<Local Station>”
- **Options:** select the range of data you need (all, by date, etc.) and format (names, labels, units, etc)
- **Output File:** select/create the file you want the data to be stored in
- Select “OK”

File can now be opened and viewed as a spreadsheet application.

