



1065 Henry Eng Place  
Victoria, BC, Canada V9B 6B2  
1.800.548.4264  
www.ftsinc.com

**Extreme environments. Extreme ruggedness. Extremely simple.**

### **Swapping Batteries on your QD Weather Station:**

Note: For this instruction you will require a 7/16" nut driver and a 1/8" hex driver, as well as 3 12V sealed lead-acid batteries (Power Patrol SLA1075 or equivalent).

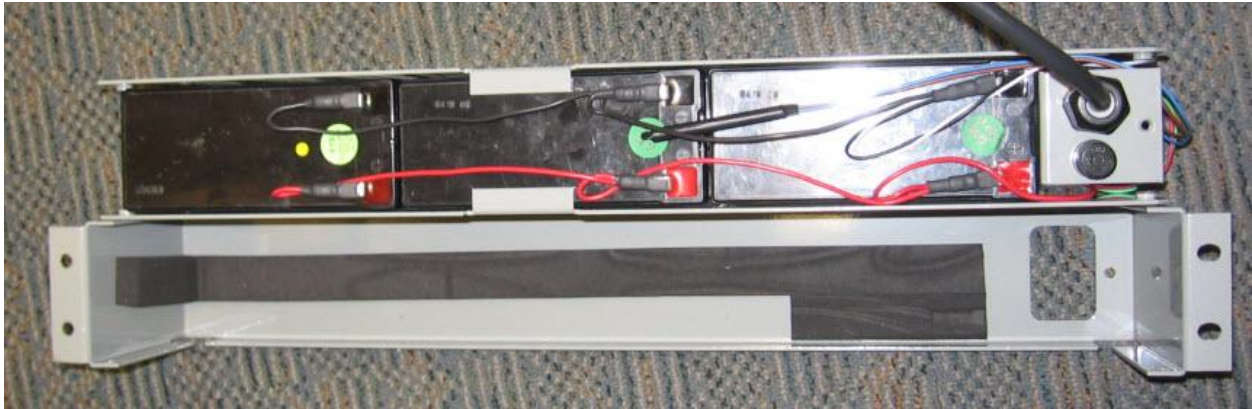
1. Open the door on your QD and locate the battery compartment to the left of your datalogger and telemetry devices.
2. If you look just above and just below the battery compartment, you will find that it is held to the back of the case by 4 nuts. Use a 7/16" nut driver to remove these nuts.



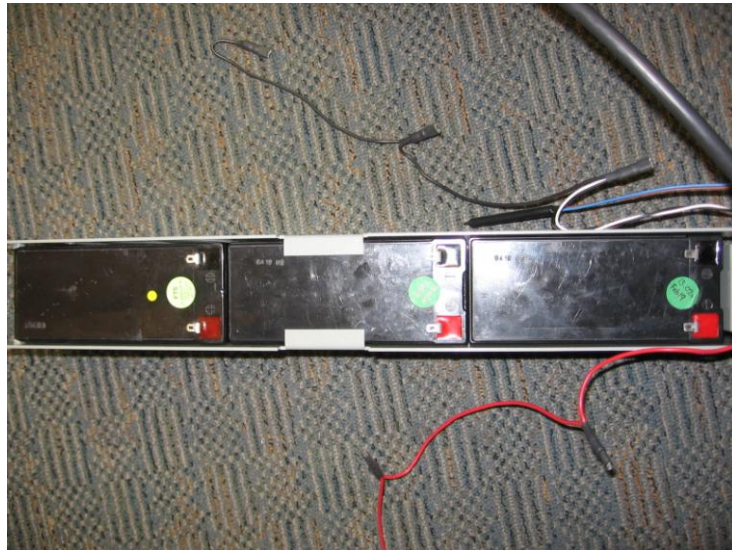
3. Once the nuts have been removed, you will be able to slide the battery compartment right out of the QD enclosure.
4. You will find that the lid of the battery compartment is held on by 9 hex bolts. Use a 1/8" hex driver to carefully remove these bolts.



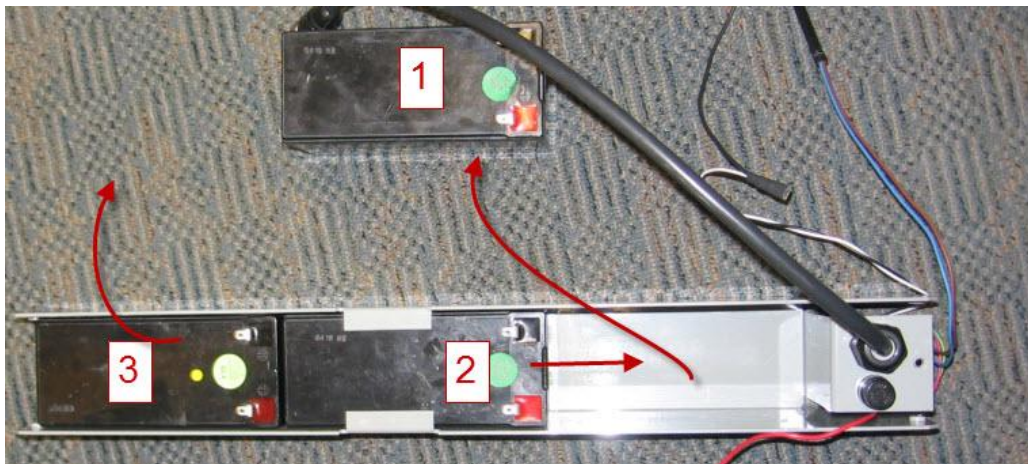
- When you take the lid off, take note of the way the wiring looks. Do you see any signs of damage or crimping?



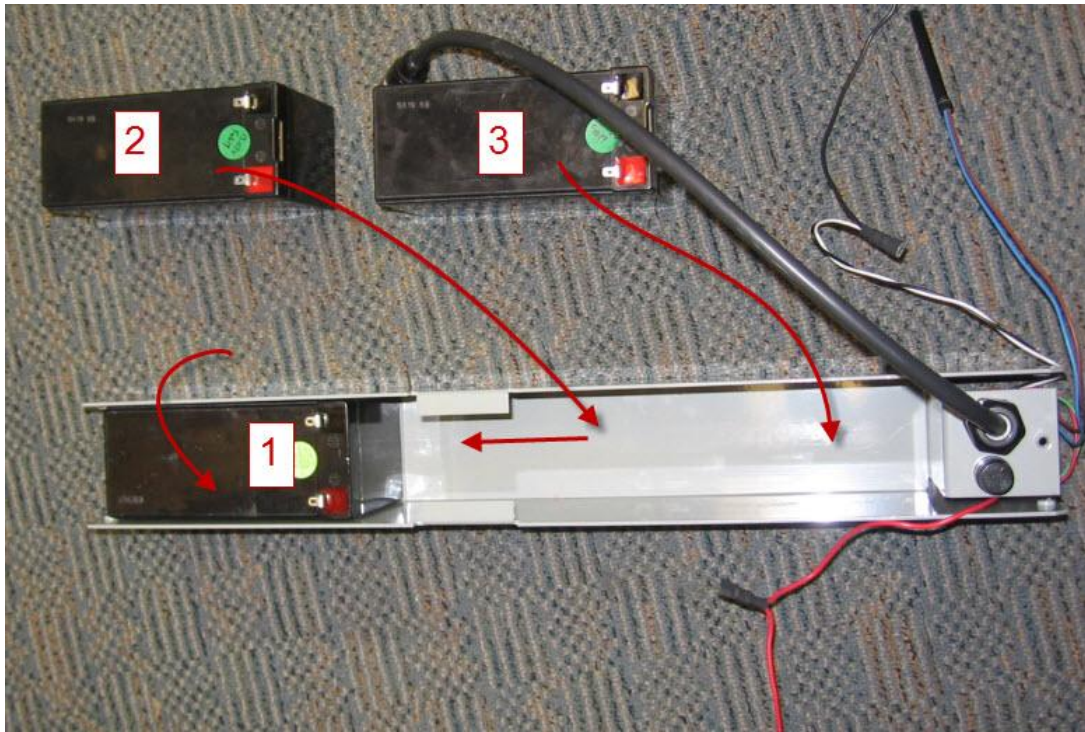
- Start by removing the black (-ve) wiring, then remove the red (+ve) wiring.



- Remove the bottom battery first, then slide the middle battery toward the fuse holder/battery cable. Then lift the top battery up and out of the box. Be careful not to short any of the battery terminals on the case.



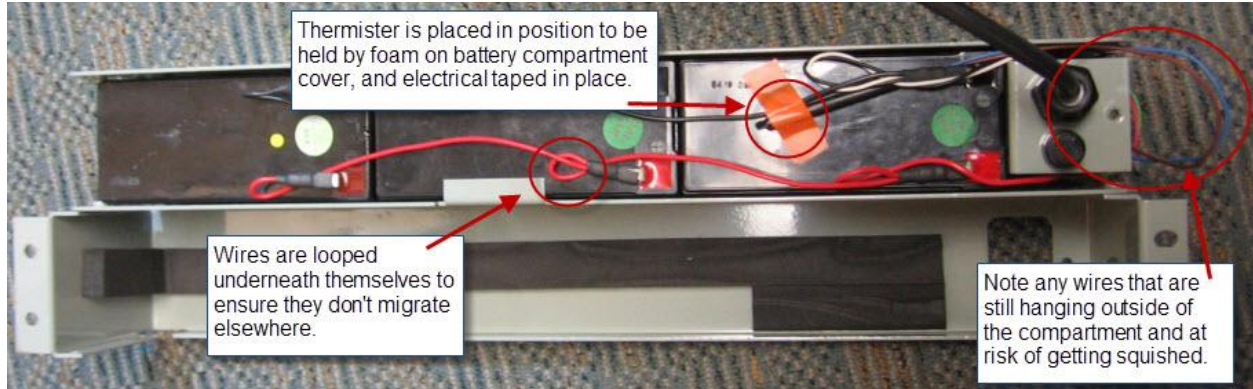
- Replace the batteries starting with the top one. Next slide the middle one into position, then place the bottom one in the case. Again, be careful not to short anything.



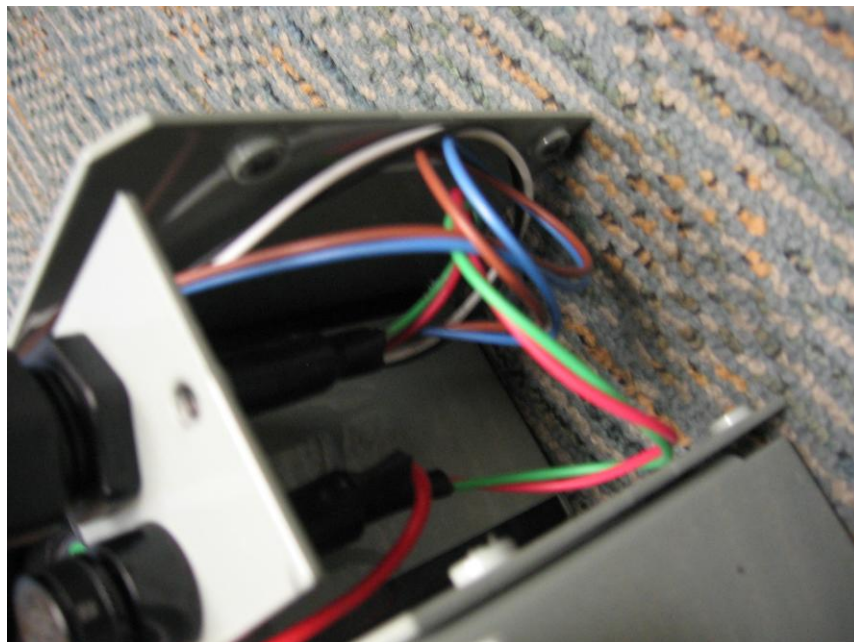
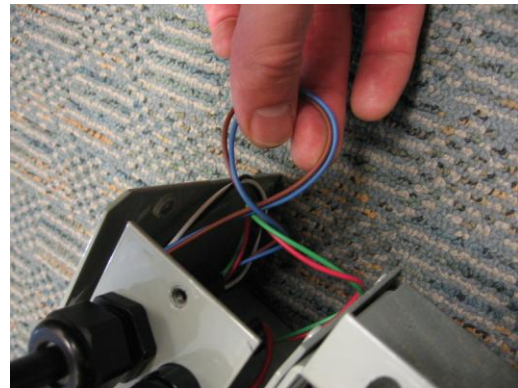
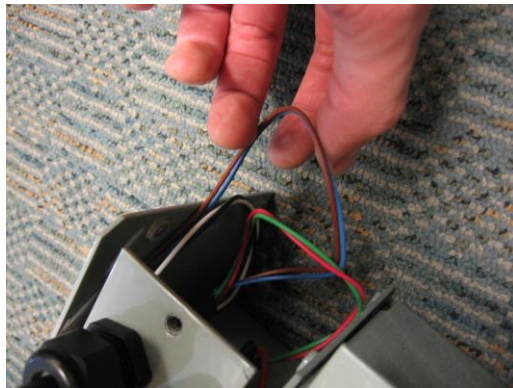
- Reconnect your wiring starting with the red (+ve) and then the black (-ve). Try to wire the batteries in such a way that the wires want to rest along the middle of the compartment.



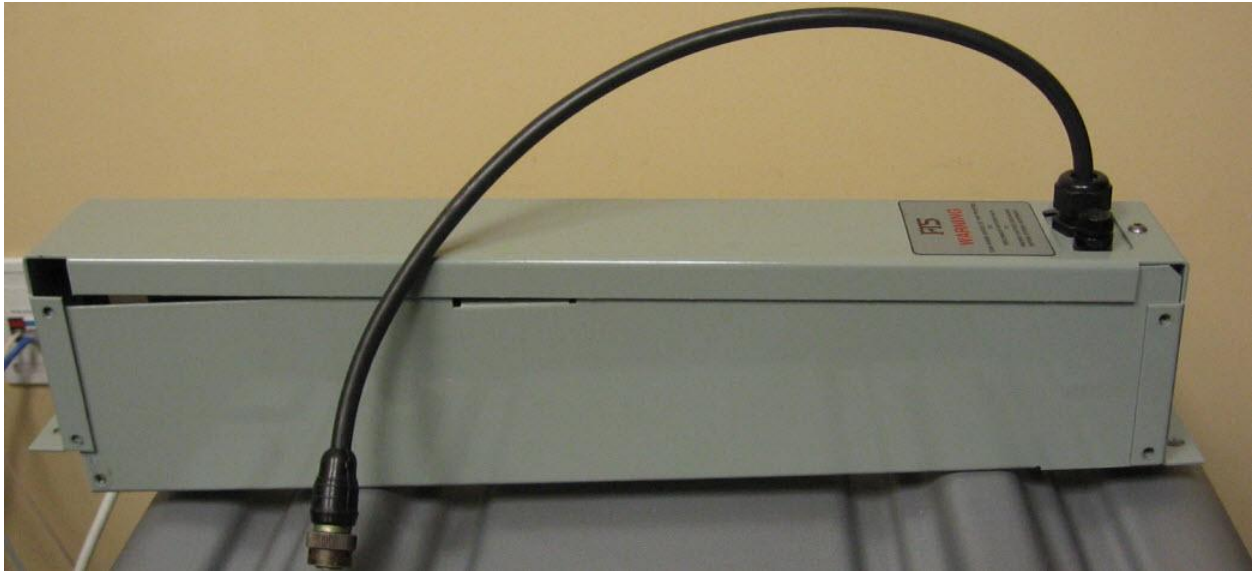
- Place the thermister into position on top of the bottom battery and fix it in place with electrical tape. Note its position in the image below. Note also in the picture below that the excess length of leads has been looped underneath the wires so that they remain in place when the lid goes back on. Check for loose wires around the bottom of the battery compartment (i.e. the thermister lead in the image below).



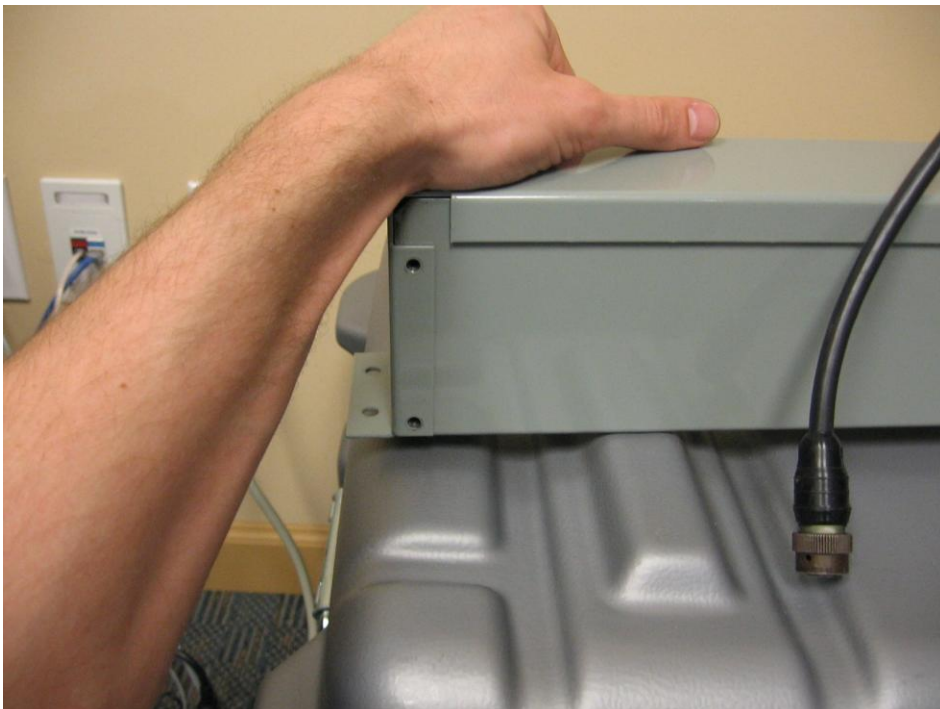
- To clean up loose ends, grab the wire and gently twist. Ensure that all loose ends are held in place within the battery compartment.



12. Carefully slide the lid back over the battery compartment, ensuring that no wires are being squished. Slowly tighten the single hex nut just below the fuse holder, checking to make sure that you don't meet any undue resistance that may be a wire.
13. Your battery compartment will now look like this. Note that the foam inside the battery compartment causes the lid to lift up slightly on the top side. Screw the other 4 screws into the bottom of the compartment.



14. Hold down the top side of the battery compartment to compress the foam inside. Carefully install the last 4 screws, ensuring that they do not get cross threaded by the pressure being applied to the lid.





15. Place your complete battery compartment back into the QD and re-attach it to the back using the 4 nuts you removed earlier.
16. The process is now complete! Call FTS Tech Support for any further assistance at 1-800-548-4264, or 1-250-478-5561.